



# General Election Opinion Poll

23<sup>rd</sup> May 2007

Prepared for

**THE SUNDAY BUSINESS POST**

RESEARCH EVALUATION DIRECTION **CLARITY**

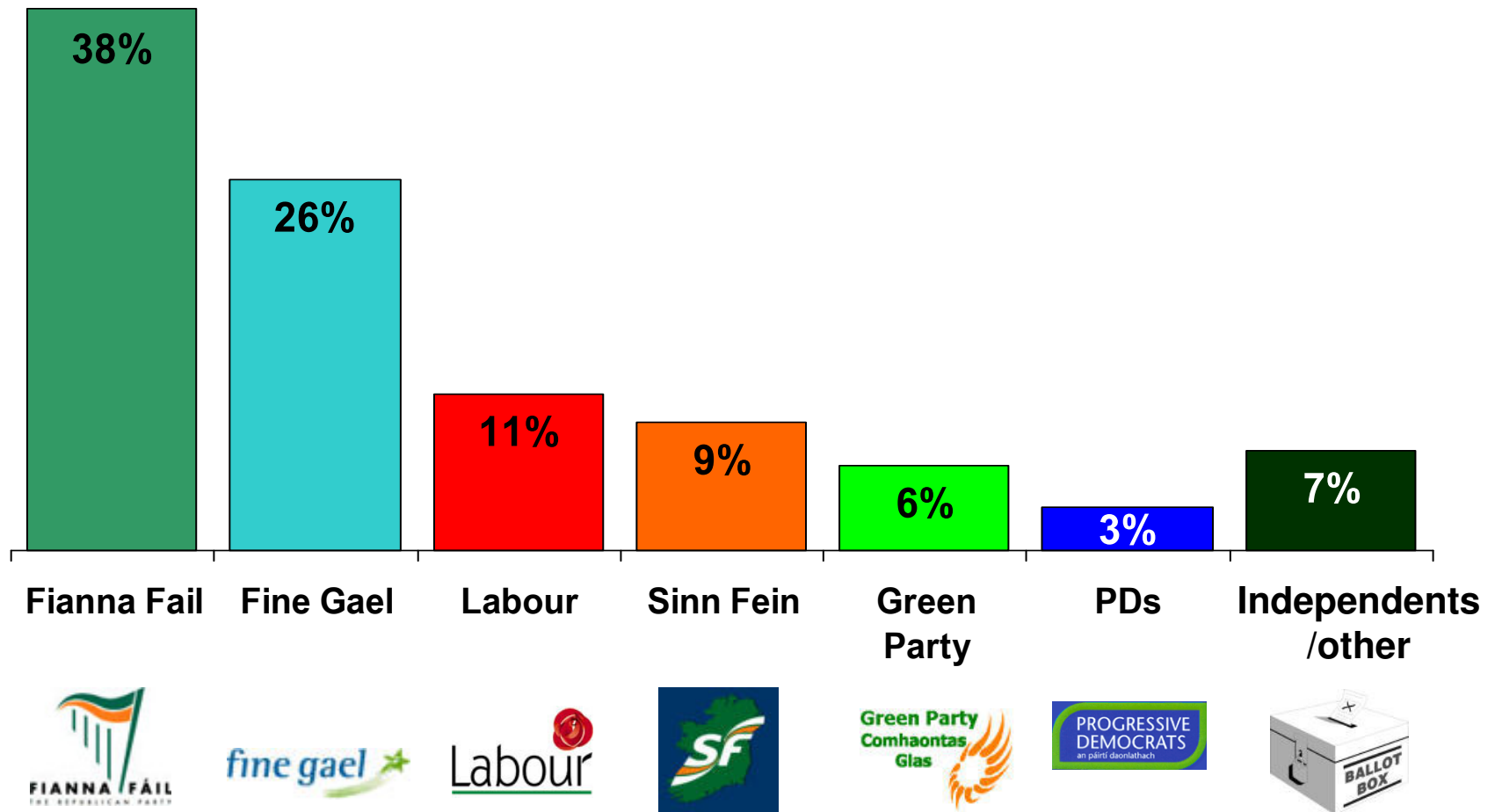
## **Must be Included**



**RED C interviewed a random sample of 1000 adults aged 18+ by telephone between the 21<sup>st</sup> & 22<sup>nd</sup> May 2007. Interviews were conducted across the country and the results weighted to the profile of all adults.**

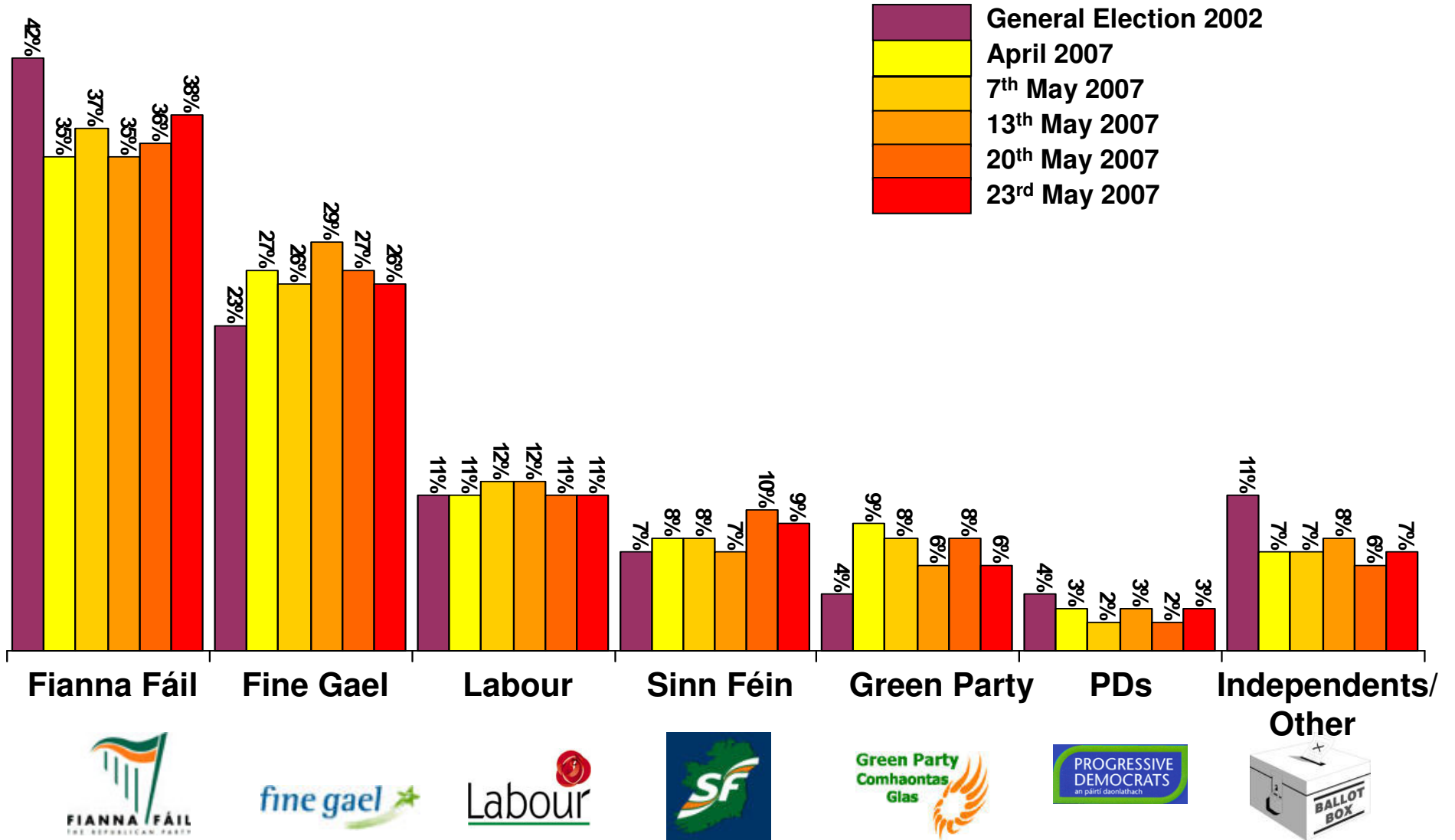
If there were a *General Election* tomorrow which party or independent candidate do you think you would give your first preference vote?

(Base: All adults 18+)



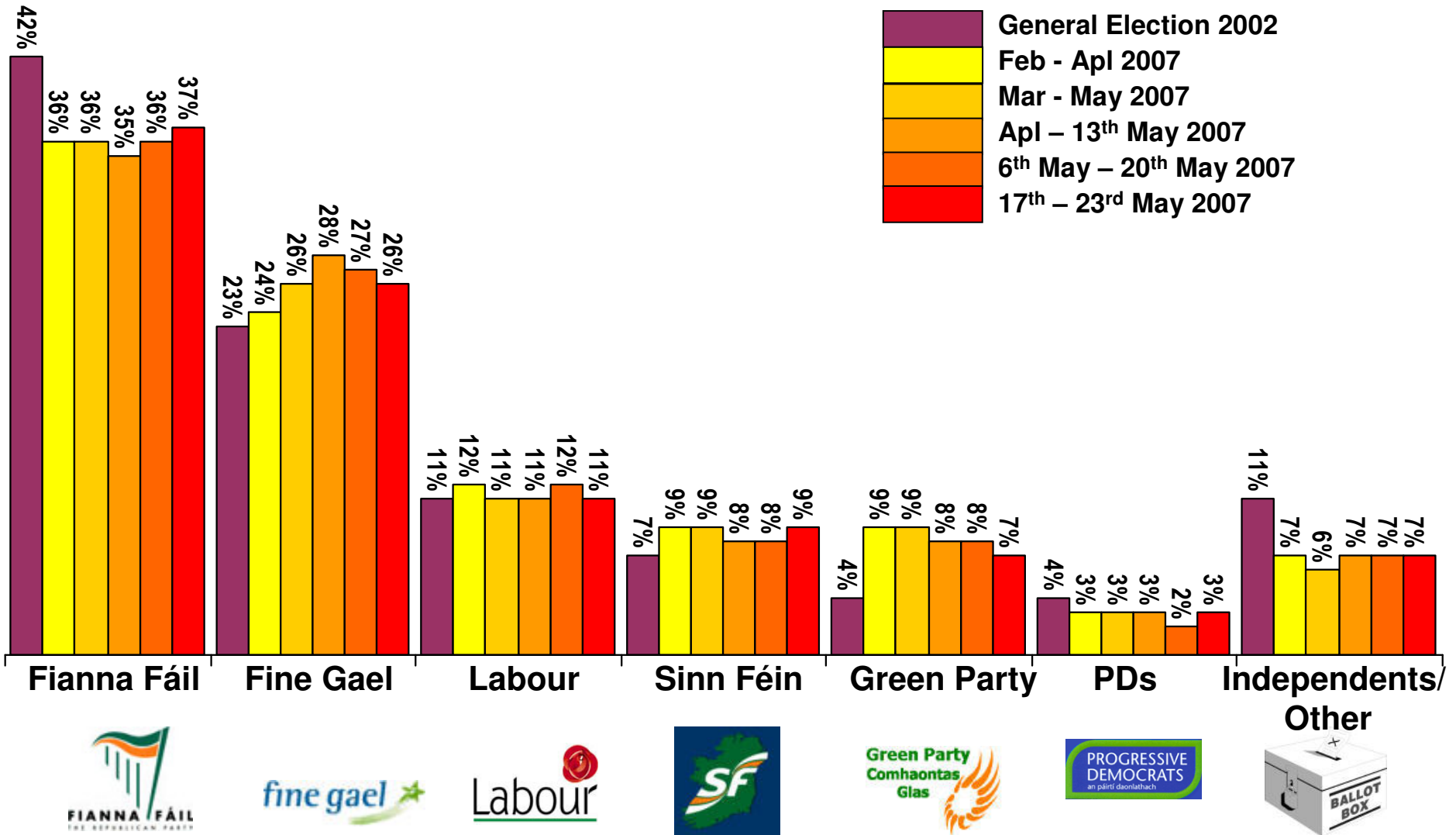
# If there were a *General Election* tomorrow which party or independent candidate do you think you would give your first preference vote?

(Base: All adults WHO WILL VOTE 18+)



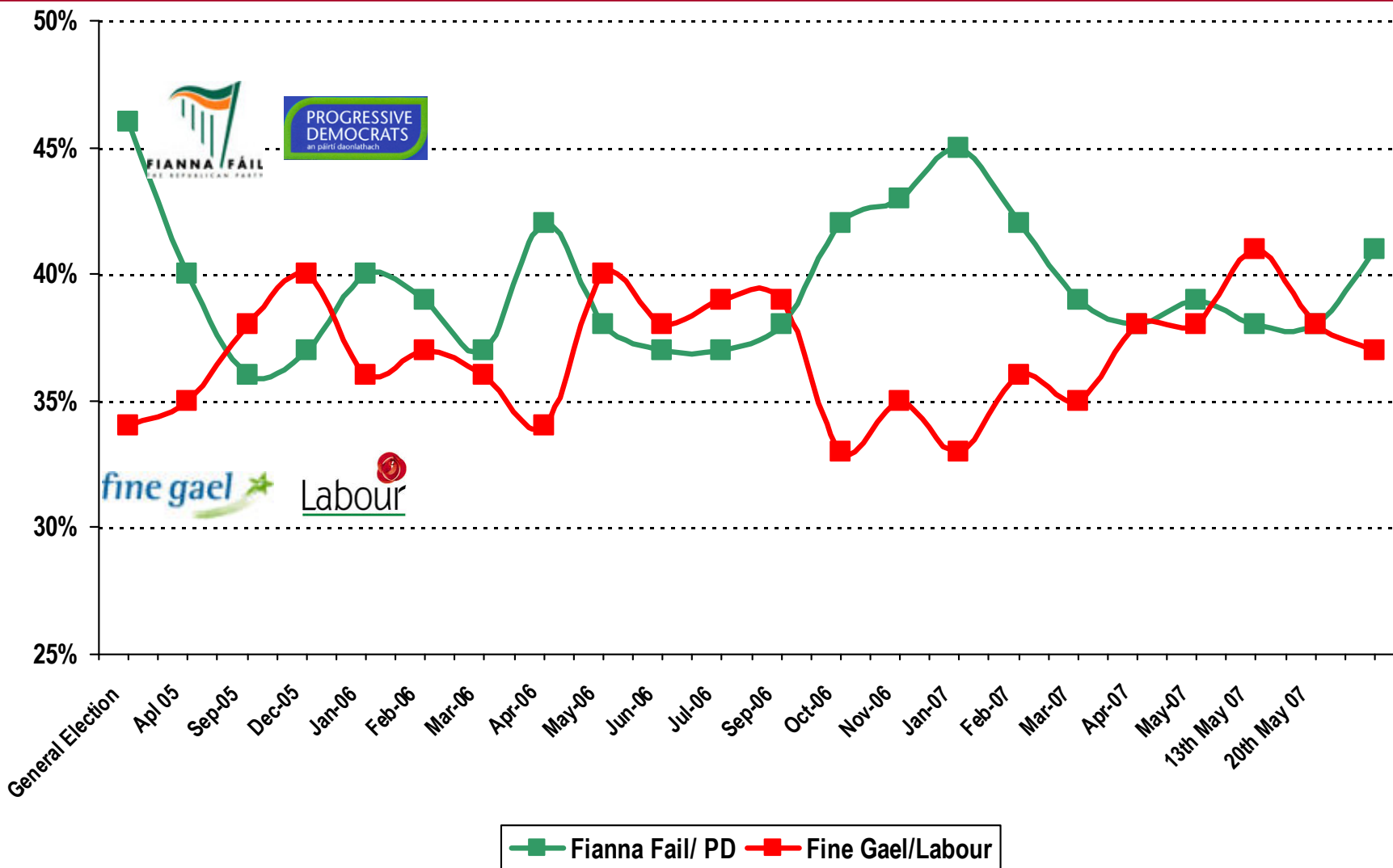
If there were a *General Election* tomorrow which party or independent candidate do you think you would give your first preference vote?

**THREE POLL ROLLING TRENDS 2006** (Base: All adults 18+)



# Potential Coalition – 1<sup>st</sup> Preference standing

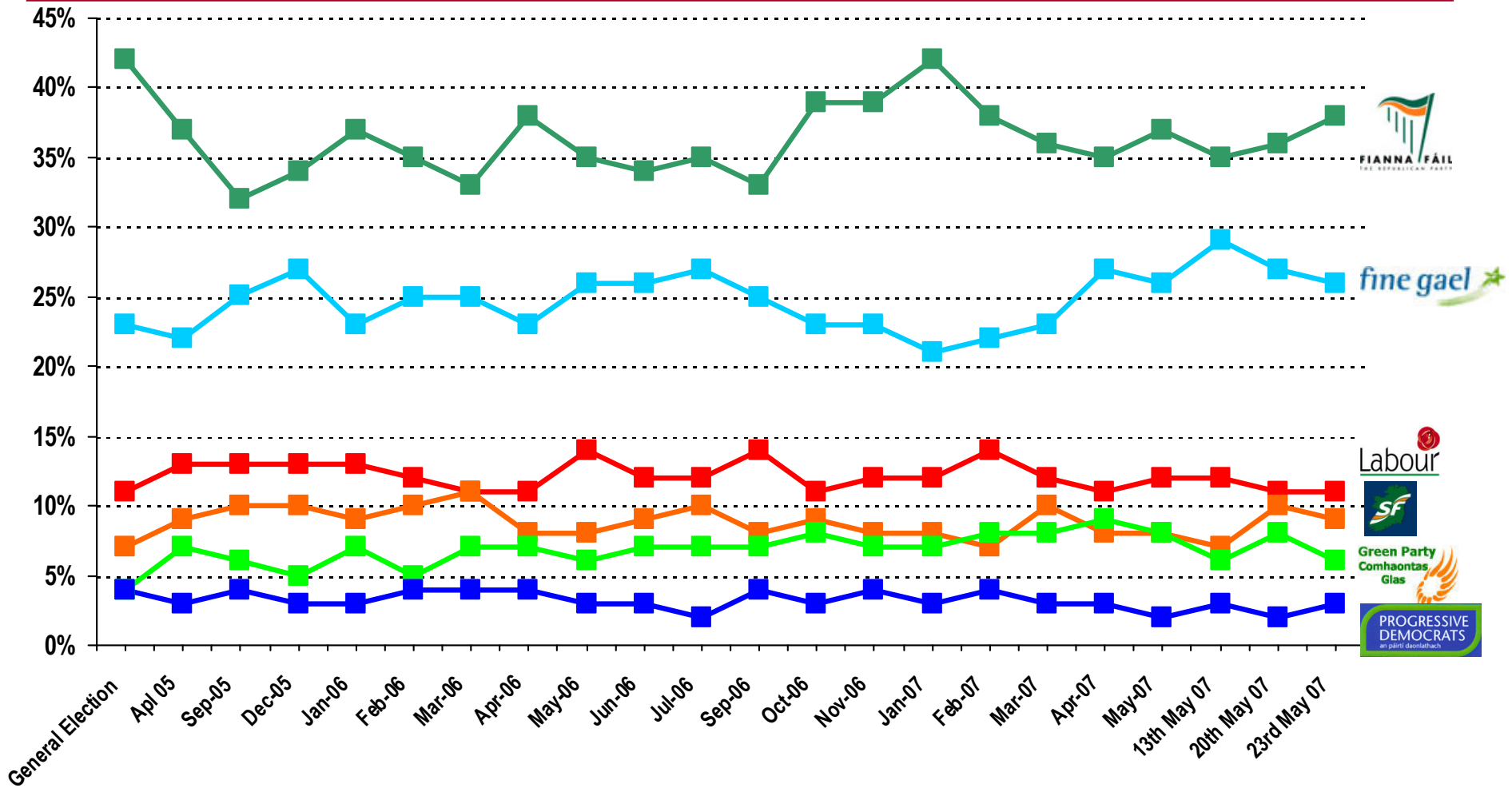
(Base: All adults 18+ likely to vote)



<b>CURRENT FIRST PREFERENCE SUPPORT</b>				
	<b>Core figures</b>	<b>Excluding undecided</b>	<b>Adjusted (Don't Know redistribution)</b>	<b>2002 Election Results</b>
	<b>%</b>	<b>%</b>	<b>%</b>	<b>%</b>
<b>Fianna Fáil</b>	<b>36</b>	<b>39</b>	<b>38</b>	<b>42</b>
<b>Fine Gael</b>	<b>24</b>	<b>26</b>	<b>26</b>	<b>23</b>
<b>Labour</b>	<b>9</b>	<b>10</b>	<b>11</b>	<b>11</b>
<b>Sinn Féin</b>	<b>8</b>	<b>9</b>	<b>9</b>	<b>7</b>
<b>P.Ds</b>	<b>3</b>	<b>3</b>	<b>3</b>	<b>4</b>
<b>Green Party</b>	<b>6</b>	<b>6</b>	<b>6</b>	<b>4</b>
<b>Independents /Others</b>	<b>6</b>	<b>7</b>	<b>7</b>	<b>11</b>
<b>Undecided</b>	<b>8</b>			

# If there were a *General Election* tomorrow which party or independent candidate do you think you would give your first preference vote?

(Base: All adults 18+)

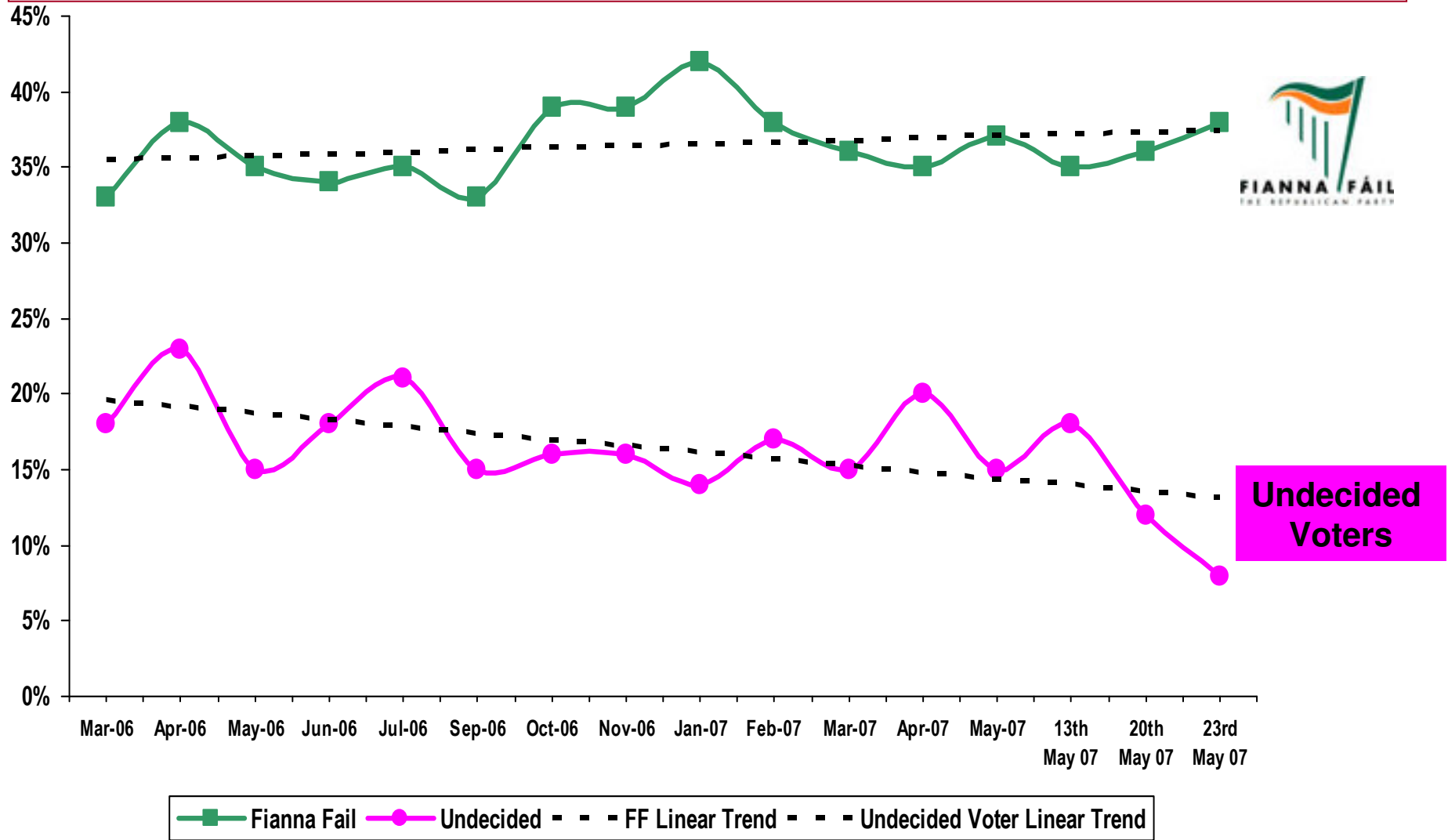


■ Fianna Fail 
 ■ Fine Gael 
 ■ Labour 
 ■ Sinn Fein 
 ■ Green Party 
 ■ PDs



# The relationship between a decrease in undecided voters and an increase in Fianna Fail support

(Base: All adults 18+)



**CURRENT FIRST PREFERENCE SUPPORT BY THOSE MOST LIKELY TO VOTE**  
 (those who give a score of 7 or more out of 10, on a scale where 1 = Definitely will not vote  
 and 10 = Definitely will vote)

	23 <sup>rd</sup> May 2007	20 <sup>th</sup> May 2007	13 <sup>th</sup> May 2007	May 2007	Apr 2007	Mar 2007	Feb 2007	Jan 2007	Nov 2006	Oct 2006	Sept 2006	July 2006	2002 Electio n Result
	%	%	%	%	%	%	%	%	%	%	%	%	%
<b>Fianna Fáil</b>	<b>38</b>	<b>37</b>	<b>35</b>	<b>38</b>	<b>36</b>	<b>35</b>	<b>39</b>	<b>43</b>	<b>39</b>	<b>39</b>	<b>35</b>	<b>36</b>	<b>42</b>
<b>Fine Gael</b>	<b>27</b>	<b>27</b>	<b>29</b>	<b>25</b>	<b>27</b>	<b>23</b>	<b>21</b>	<b>21</b>	<b>23</b>	<b>23</b>	<b>25</b>	<b>26</b>	<b>23</b>
<b>Labour</b>	<b>11</b>	<b>11</b>	<b>12</b>	<b>12</b>	<b>11</b>	<b>12</b>	<b>14</b>	<b>13</b>	<b>12</b>	<b>11</b>	<b>14</b>	<b>11</b>	<b>11</b>
<b>Sinn Féin</b>	<b>8</b>	<b>9</b>	<b>7</b>	<b>7</b>	<b>7</b>	<b>10</b>	<b>7</b>	<b>6</b>	<b>7</b>	<b>9</b>	<b>8</b>	<b>10</b>	<b>7</b>
<b>P.Ds</b>	<b>3</b>	<b>2</b>	<b>3</b>	<b>2</b>	<b>3</b>	<b>3</b>	<b>4</b>	<b>3</b>	<b>4</b>	<b>3</b>	<b>4</b>	<b>3</b>	<b>4</b>
<b>Green Party</b>	<b>6</b>	<b>8</b>	<b>6</b>	<b>8</b>	<b>10</b>	<b>9</b>	<b>8</b>	<b>6</b>	<b>7</b>	<b>7</b>	<b>6</b>	<b>7</b>	<b>4</b>
<b>Independents/ Others</b>	<b>7</b>	<b>6</b>	<b>8</b>	<b>8</b>	<b>6</b>	<b>8</b>	<b>7</b>	<b>8</b>	<b>8</b>	<b>7</b>	<b>8</b>	<b>7</b>	<b>11</b>